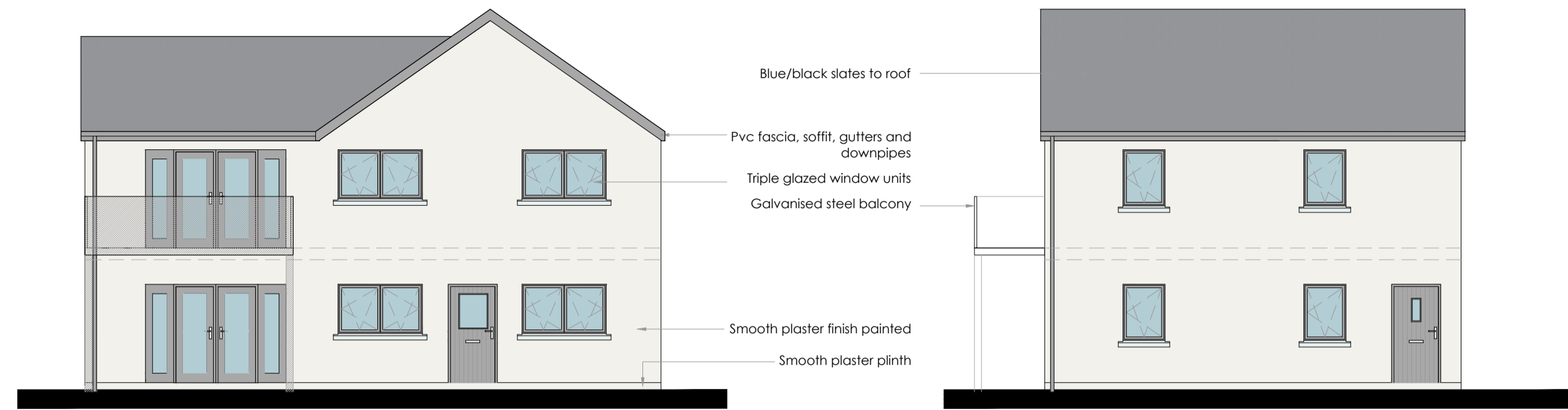


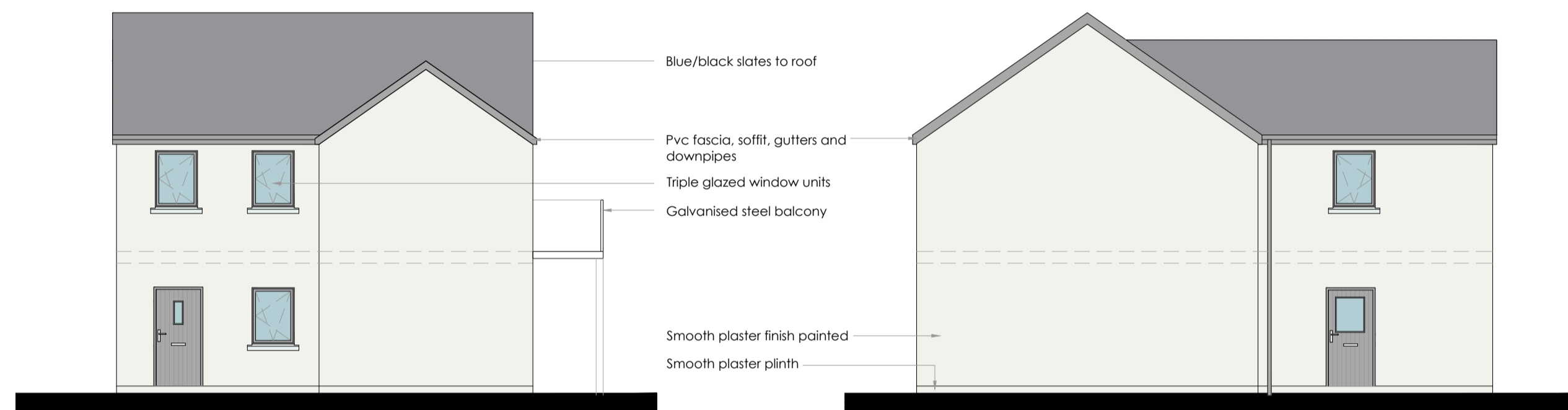
# Apartment Type 17 GF & FF

Quality Housing for Sustainable Communities Standards



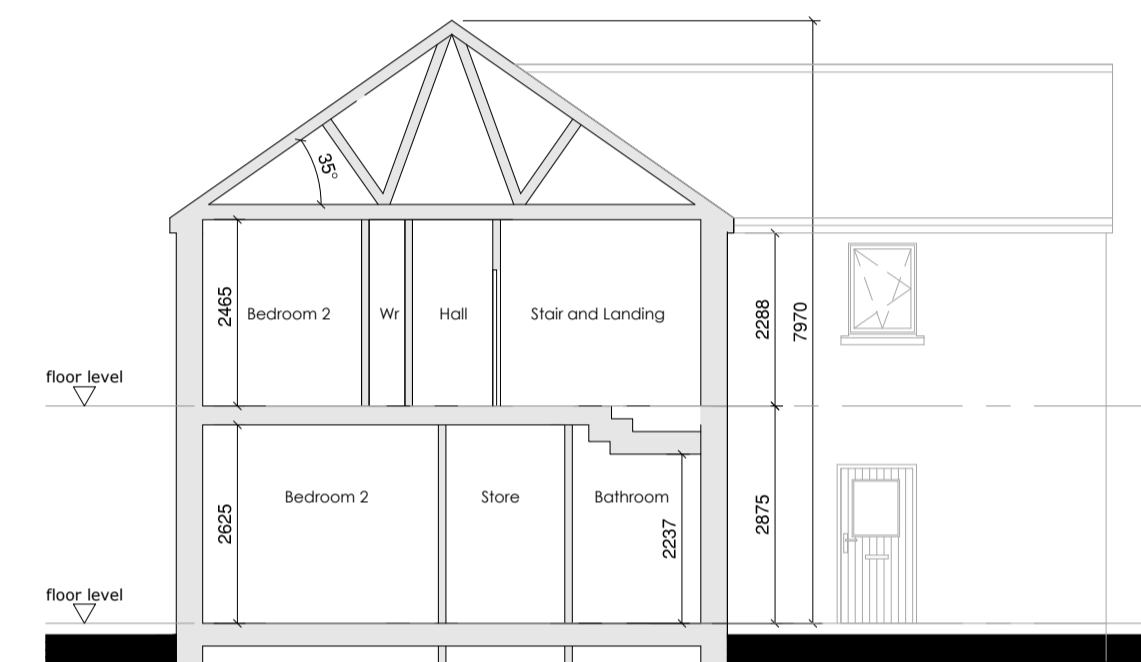
Main Side Elevation. Scale 1:100

Front Elevation. Scale 1:100



Rear Elevation. Scale 1:100

Rear Side Elevation. Scale 1:100



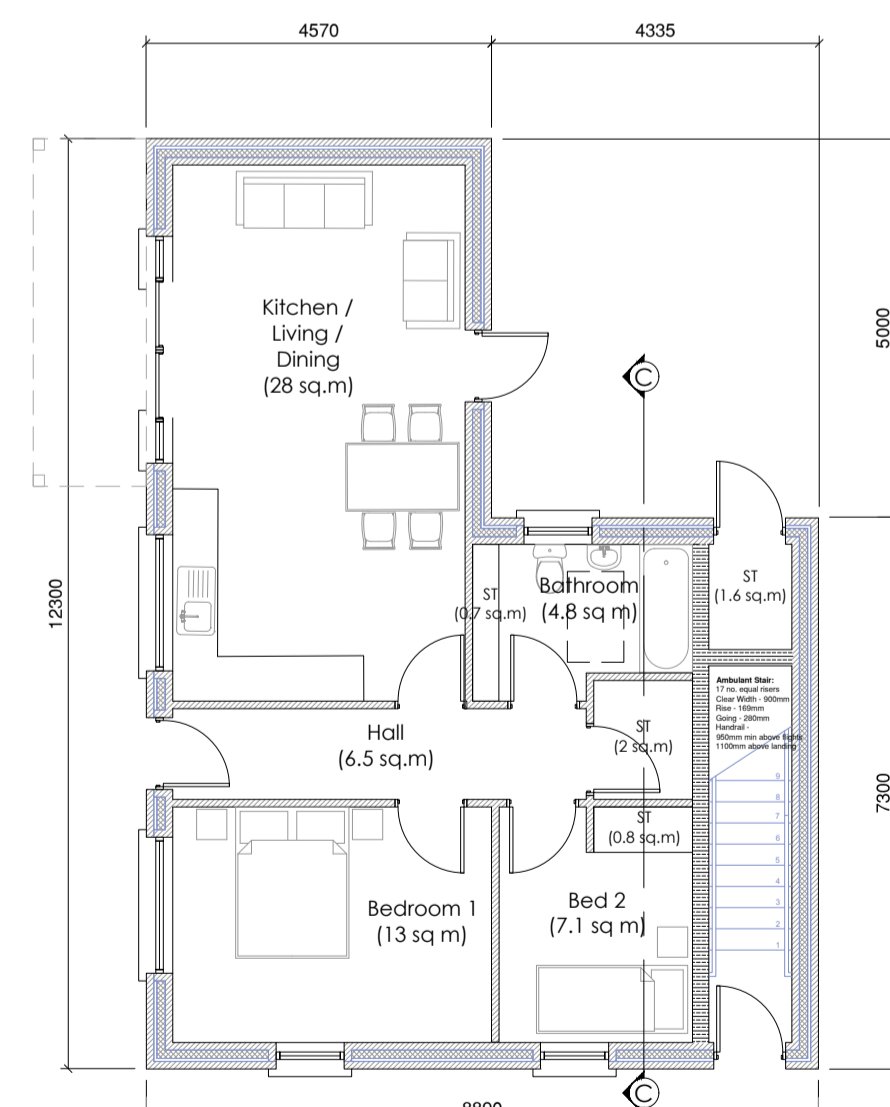
Section C-C. Scale 1:100

## 2 Bedroom / 3 Person Apartment Areas:

	Gross Floor Areas (m <sup>2</sup> )	Min-Main Living Room (m <sup>2</sup> )	Aggregate Living Area (m <sup>2</sup> )	Aggregate Bedroom Area (m <sup>2</sup> )	Storage (m <sup>2</sup> )	Private Amenity Space (m <sup>2</sup> )
Required	63 sqm	13 sqm	28 sqm	20 sqm	5 sqm	6 sqm
Provided - HT17 GF	66 sqm	-	28 sqm	20.1 sqm	5 sqm	22-50sqm (Garden)
Provided - HT17 FF	73 sqm	-	28 sqm	20.2 sqm	5 sqm	6 sqm (Balcony)

## 2 Bedroom / 3 Person Apartment Widths:

	Single Bedroom (m)	Double Bedroom (m)	Living Room (m)
Required	2.1m	2.8m	3.6m
Provided - HT17 GF	2.5 m	3.1 m	3.8 m
Provided - HT17 FF	2.1 m	3.5 m	3.8 m

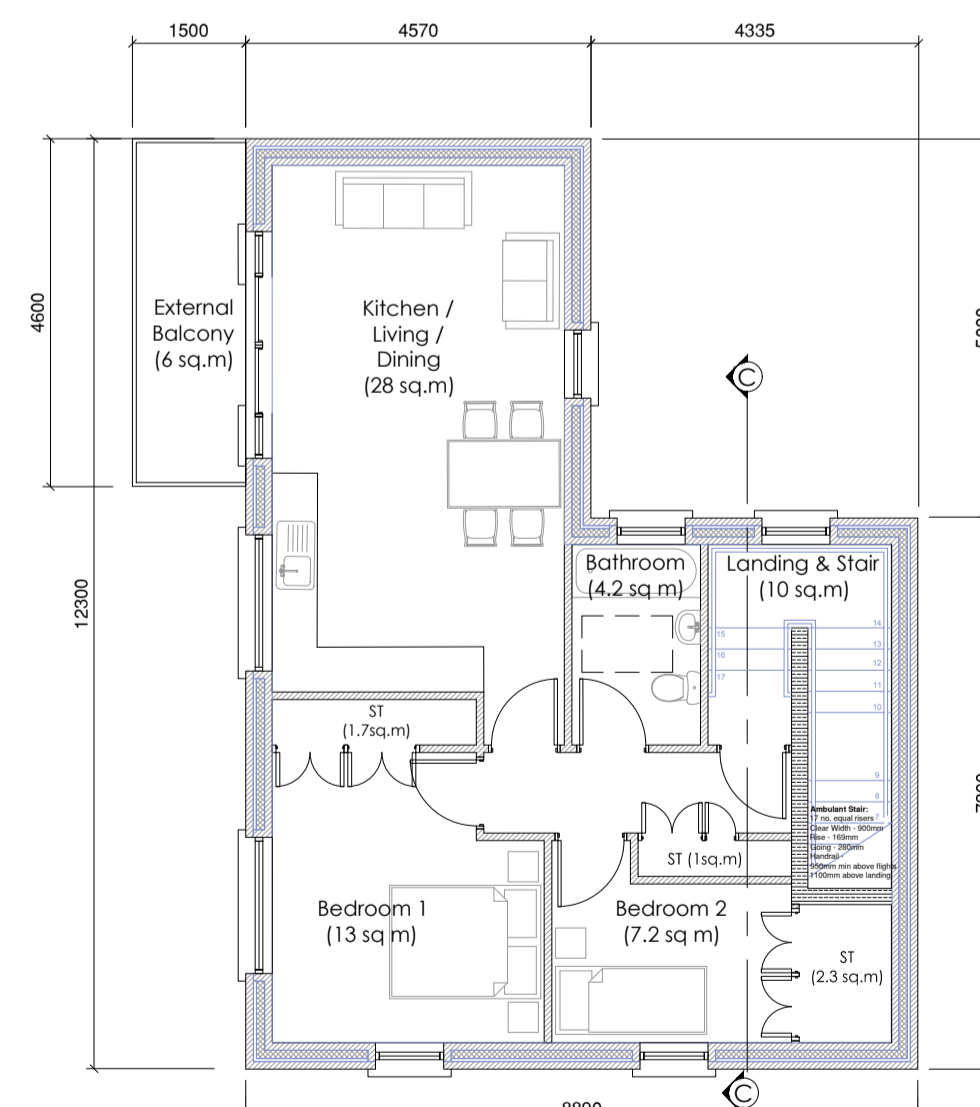


House Type 15 GF  
2Bed 3 Person 66 Sq m

Ground Floor Plan. Scale 1:100

### GROUND FLOOR APARTMENT

66 sq. m  
(excluding stair, including external store)

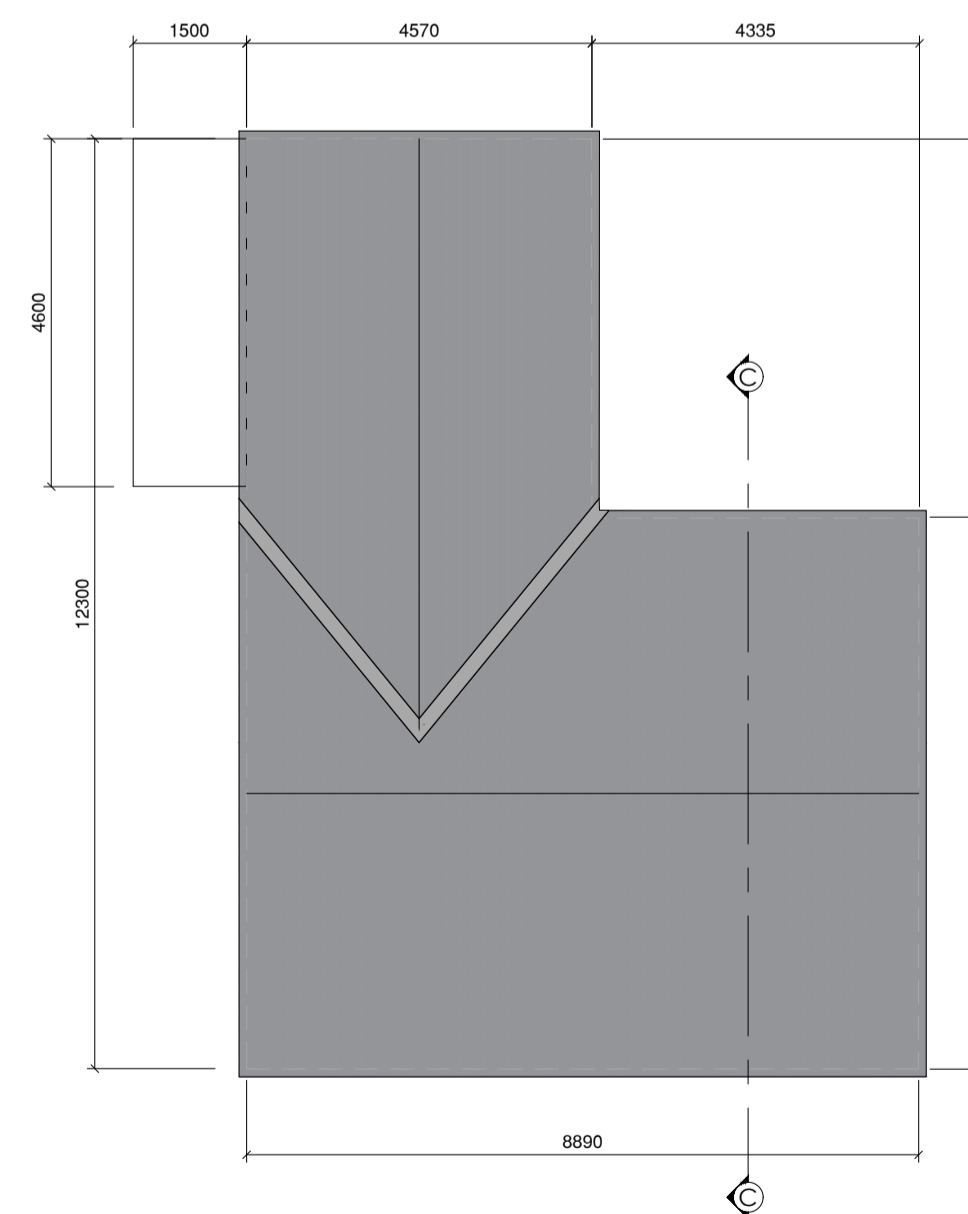


House Type 15 FF  
2Bed 3 Person 73 Sq m\*

First Floor Plan. Scale 1:100

### FIRST FLOOR APARTMENT

64 sq. m  
(excluding landing and stair)  
  
73 sq. m  
(including landing and ambulant stair)



Roof Plan. Scale 1:100

## Revisions

x xx/xx/xx x

Rev: Date: Details:

**Donegal County Council**  
Architectural Services



DCC Tel: 074 91 53900 DCC Fax: 074 91 72812

**PART VIII PLANNING APPLICATION**

### Project:

Gallows Lane, Lifford

Ref: HCS 02 19

### Drawing Title:

HT17 (Units 14-15, 20-21)  
2 Bed 3 P Apartment

Drawing No: P006

Date: 12.03.20 Scale: 1:100 @ A1

Drawn by: SMC Job No: HCS 02 19